

NEW FROM BERKSHIRE!

You asked and we're delivering!

We're adding more color & size selections to give you even more design options. Twelve new White Core options (four in oversize), six new oversize Cream Core selections, plus two new Berkshire Suedes in oversize all add up to well over 300 items in the entire Berkshire collection. See the Berkshire specifier for complete color and size availability.



NEW WHITE CORE

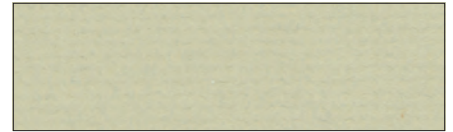
Eight new 32 x 40 colors plus four new oversize options, our complete White Core collection now totals 57 items! All feature bright white eco-core™ and are buffered, pH neutral.



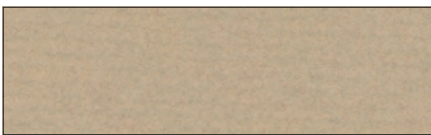
BW800
Hot Pink



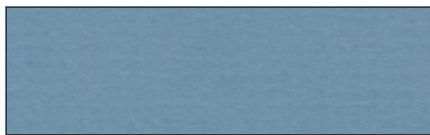
BW534
Fountain Blue



BW253
Pale Laurel



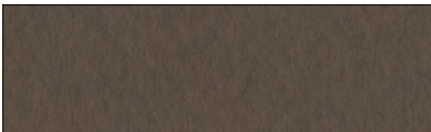
BW558 BW8-558
Tawny



BW538
Brittany Blue



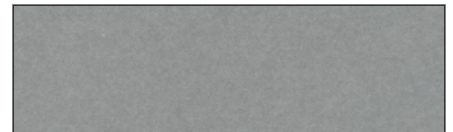
BW535 BW8-535
Gray



BW106 BW8-106
Weatherwood



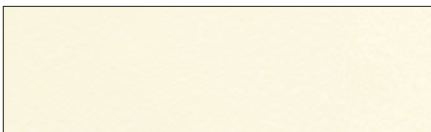
BW8-334
Bottle Blue



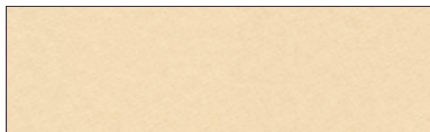
BW802 BW8-802
Mid Gray

NEW CREAM CORE OVERSIZE

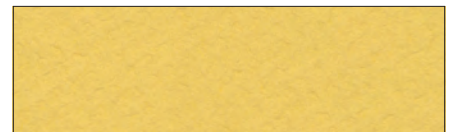
Six new options now available in 40 x 60 size! All feature cream core and are buffered, pH neutral. See the Berkshire Specifier to view all 238 Berkshire Cream Core items.



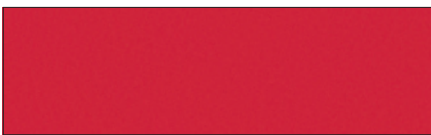
B8-X501
Papyrus



B8-126
French Vanilla



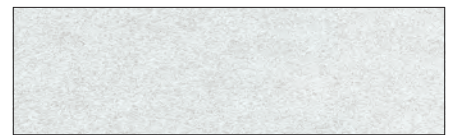
B8-235
Chamois



B8-550
Cardinal



B8-146
Sea Foam



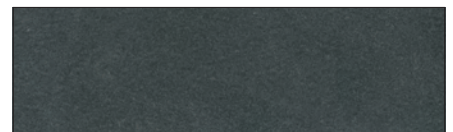
B85-074
Frosted Silver

NEW SUEDE OVERSIZE

Two new beautiful Suedes now available in 40 x 60 size, bringing the total of Berkshire Suedes to 30! All feature bright white eco-core™ and are buffered, pH neutral.



B89-137
Thicket



B89-141
Ash

Berkshire Matting
A Product of Crescent

100 W. Willow Road • Wheeling, Illinois 60090 U.S.A.
www.berkshiremat.com
800.323.1055

All patterns are copyrighted designs of Crescent Cardboard Company, L.L.C.
Copyright 2015
© Registered trademark of Crescent Cardboard Company, L.L.C.